

## Road Safety Education and Campaign Project

Road Safety Education and Campaigning project is one of the projects under EU funded Traffic Safety Improvements programme implemented as a mechanism to ensure a series of precautions are taken to improve the road safety conditions . The overall objective of this project is to contribute to the road safety studies by helping the community understand the factors that cause road accidents and to raise awareness on this issue.

The services in the context of this project:  
In accordance with the results of the communication strategy and training needs analysis conducted within this project,

- \* To disseminate information about the factors causing traffic accidents,
- \* To provide an understanding of the traffic rules to reduce these accidents,
- \* To contribute to the capacity building of stakeholders via training programmes to implement targeted and efficient campaigns on traffic safety enhancement.

The project is being implemented in cooperation with the Traffic and Transportation Services Commission and its Sub-Committee on Education, Research and Awareness. In addition, media sector, many public, private and civil society organisations are among the stakeholders of the project.

During project period we will be meeting you with brochures, posters, radio spots, TV programmes. You are invited to follow us from the web-site below, the social media networks and even to participate as a volunteer.

**Osman Paşa Caddesi Mirata Apt. 1/4  
Köşklüçiftlik LEFKOŞA**

**Phone : (392) 227 90 58**

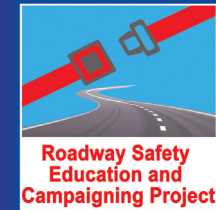
**Fax : (392) 227 93 41**

**E-mail: [info@trafikve yolguvenligi.info](mailto:info@trafikve yolguvenligi.info)  
[www.trafikve yolguvenligi.info](http://www.trafikve yolguvenligi.info)**

**Promise to be a good driver obeying the traffic rules. Let's stop fatalities and economic losses on roads together.**



# Accident Types



***"EU works for you"***



This project is funded by the European Union and implemented by Piri Group consortium.

**piri group**

This publication has been produced with the assistance of the European Union. The contents of this publication are the sole responsibility of Piri Group and can in no way be taken to reflect the views of the European Union.



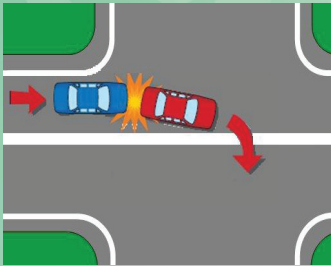
## Accident Types

Everyday on the average 10 accidents occur on our roads. Whilst 7 of these cause economic loss, the remainder three may result in serious injuries or fatalities. Statistics indicate that 118 people get injured each month, of which 18 cases are serious. In these accidents fatality rate is 4 per month.

A deeper analysis shows that there are 6 common accident patterns that are mostly seen on our roads. These accident patterns and the factors causing them are summarised below:

### 1. Collision with the rear of another vehicle travelling in the same direction

Majority of accidents are in the form of colliding with the rear of a vehicle travelling in the same direction.

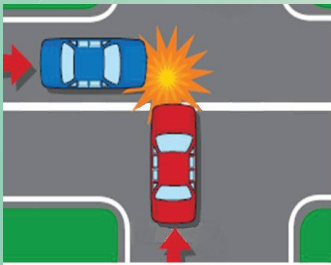


The reason is the absent state of the driver or failure to keep a safe driving distance with the car in front. Data available for 2008 and 2009 indicates that 18% of the accidents

occurred in this form of hitting a car cruising in front or stopped from the rear side.

### 2. Collisions at the intersections

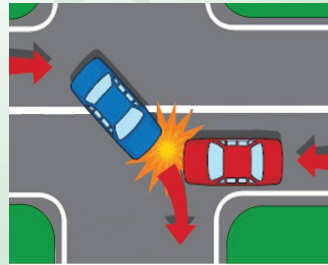
Another common accident type is entering the main road without stopping at the intersection and without respecting the right of way of the cars on the main road. Probable reasons for these accidents are, besides



not respecting the right of way of other cars, too fast speed to stop at intersections or even sense them. 2008 and 2009 data indicates that 14.5% of the accidents occur in this way.

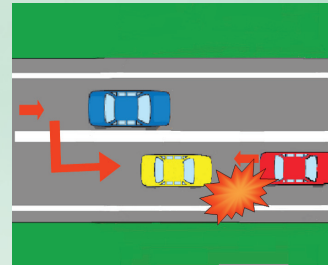
### 3. Collision of cars in opposing directions

Collision of cars travelling in different directions and even lanes is another common type of accidents. The reasons are mostly not obeying the right of way or losing control of the car for any reason. According to the data available for 2008 and 2009, 7% of accidents occur in this way.



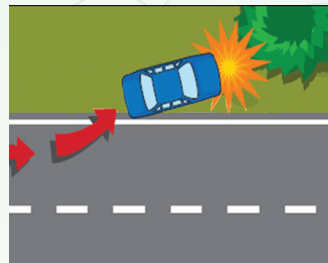
### 4. Improper overtaking

This is a mistake common for drivers with over confidence. Without obeying the rules on the road lines or controlling the road conditions and the view angle, improper overtaking is the main reason for these accidents. In general, fatality is a probable result for these accidents. 2008 and 2009 data indicates that 18% of accidents are in this form.



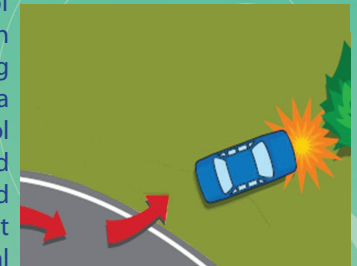
### 5. Running off the road

Due to loss of vehicle control for any reason or due to failure in adapting to the road surface conditions, running off the road and hitting an object or a vehicle at the edge of the road is common for inexperienced drivers, impaired drivers under the influence of alcohol or those who can not see the road properly. According to 2008-2009 data, 23.8% of the accidents on our roads occur either in this form (running off the road on a straight section) or in the form described further (running off the road on a curve or bend).



### 6. Running off the road on a curve due to high speed

As a result of travelling at high speed while passing through a curve or a bend, losing control of the vehicle and running off the road due to the effect of the centrifugal force, is a common accident type.



Analysis of the above described 6 common accident types indicates that violation of traffic rules e.g. excess speed, failure to maintain a safe distance with the other vehicles, violating the rules of right of way and improper overtaking, are the major reasons causing these accidents.

Whilst for inexperienced drivers, running off the road and collisions at intersections are more common; for experienced drivers colliding with the rear of another vehicle due to distraction, not obeying the right of way at intersections, improper overtaking and excessive speed related accidents are seen more.

Good drivers are those who:

- \* keep a safe distance with the other vehicles,
- \* adjust speed according to traffic sign posts and road conditions,
- \* respect the right of other drivers, especially the right of way rules,
- \* are always careful and concentrated on driving and changing conditions of the road.

Whatever the type of vehicle you drive is, promise to be a good driver. Let's stop fatalities and economic losses on roads together.